

351
—
363

Massachusetts
— AVENUE —

FOR LEASE

OFFICE & MEDICAL SUITES



**COLONIAL
PROFESSIONAL
BUILDING**

**1,281 SF
AVAILABLE**

**BUILDING SIZE
& LAND AREA**

- Approximately 11,157 SF

LEVELS

- 3 with the lower level at grade

JOIN

- Lex Spa
- Boomy Aesthetics
- Teles Esthetics
- Verge Therapy
- Sol-Solecito Family Day Care



LEXINGTON, MA



**GODINO
& COMPANY, INC.**

TOM GODINO
President
617-965-4200 x1
tgodinosr@godinoco.com

SUSAN ELLIS
Vice President
617-965-4200 x2
sgodino-ellis@godinoco.com



MEDIAN HOUSEHOLD INCOME

\$153,820

1 Mile

\$140,713

3 Miles

FAMILIES

3,092

1 Mile

25,998

3 Miles

POPULATION

11,737

1 Mile

99,843

3 Miles

HOUSEHOLDS

4,548

1 Mile

39,545

3 Miles

MEDIAN AGE

47.2

1 Mile

46.4

3 Miles

15,250

TOTAL BUSINESSES

\$67,541

PER CAPITA INCOME

225,295

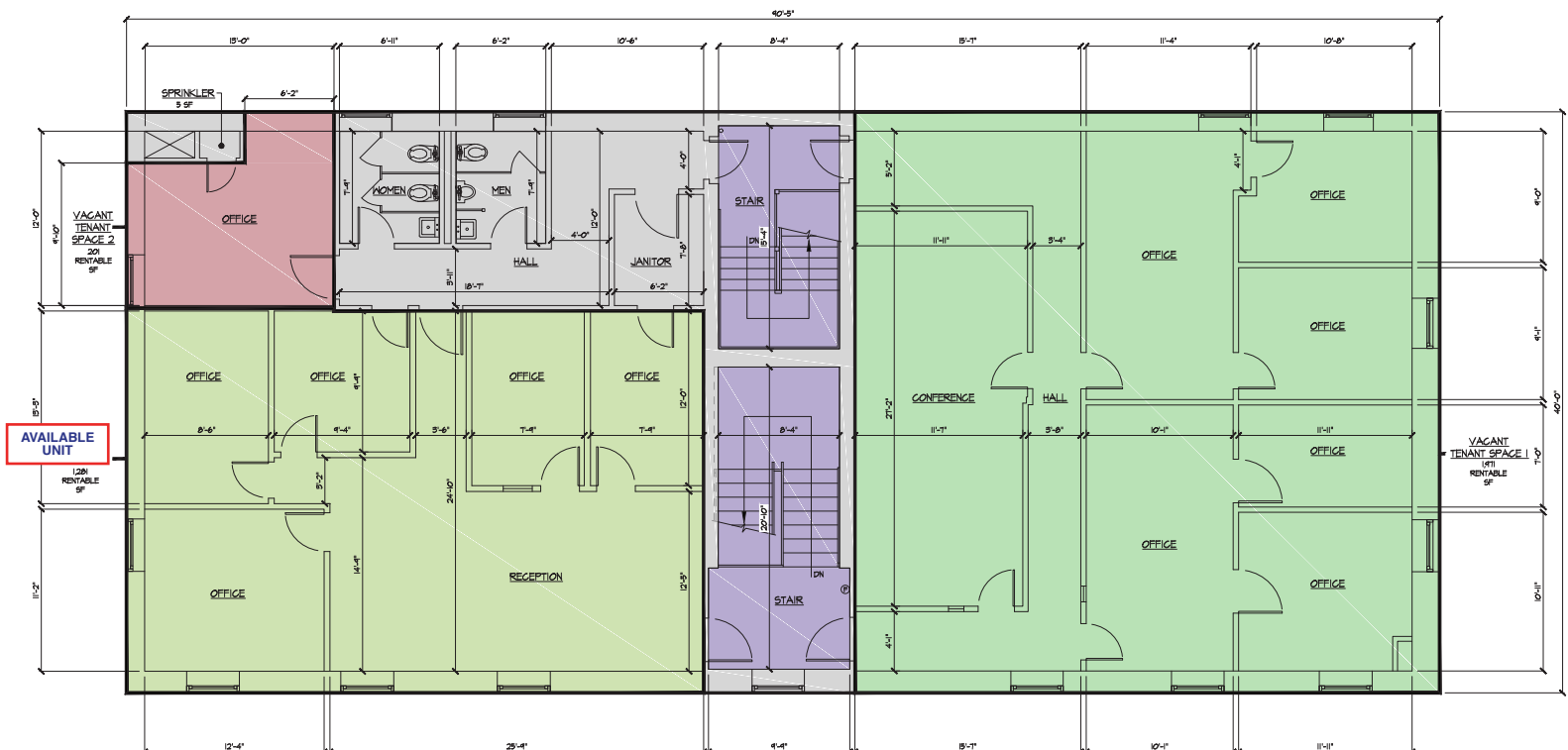
TOTAL EMPLOYEES IN 5 MILE RADIUS

\$258,629

MEDIAN NET WORTH

FLOOR PLAN

2ND FLOOR



351-363 MASSACHUSETTS AVE.

OFFICE & MEDICAL SUITES

LEXINGTON, MA
02420

LOCATION

- On Lexington's historic Massachusetts Avenue, with easy access to Routes 2, I- 95/128, and 93. Easy access to public transportation & the Minuteman Bike Path, near Arlington Line
- Parking: 31 spaces
- Sprinkler: Wet sprinkler system. Alarms monitored by a central station
- HVAC: Each space contains a split system.

NEARBY AMENITIES

- Lexington Toyota
- Great Harvest Bread
- Trader Joe's
- Petco Unleashed
- Dunkin Donuts,
- Walgreen's
- UPS Store
- Citizen's Bank



AVAILABLE UNIT PHOTOS



GODINO
& COMPANY, INC.

TOM GODINO
President
617-965-4200 x1
tgodinosr@godinoco.com

SUSAN ELLIS
Vice President
617-965-4200 x2
sgodino-ellis@godinoco.com